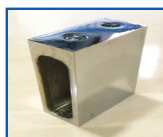


Serie-3 Kit 05 (2F + 2P) ANGULAR Aluminio + Laton



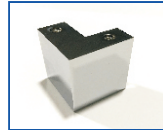
2 Uni. Soportes Guia
Ref.: S-3PA01



4 Uni. Anti-Descarrile Excentrico
Ref.: S-3AD01



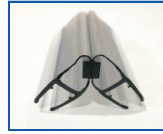
4 Uni. Rueda Excentrica
Ref.: S-3R01



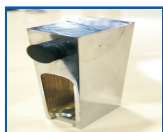
1 Uni. Esquinero Angular
Ref.: S-3ES01



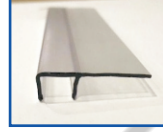
4 Uni. Soportes Fijo
Ref.: S-3S01



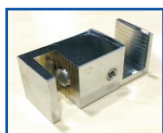
2 Uni. Iman 45° 2,2 m.
Ref.: S-3I4501



4 Uni. Freno
Ref.: S-3F01



4 Uni. Ala 2,2 m.
Ref.: S-3AV6



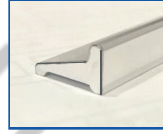
2 Uni. Guia Regulable
Ref.: S-3G01



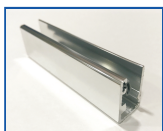
1 Uni. Cascada 1 m.
Ref.: S-3C01



1 Uni. Perfil Acero (30 x 10 x 1,5 mm.) a 2 m.
Ref.: S-3PG01

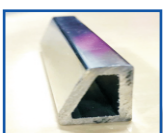


1 Uni. Vierteaguas 1 m. (9 x 15 mm.)
Ref.: S-3V01

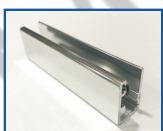


2 Uni. "U" de Aluminio (23 x 15 x 23 - V.6 ó V.8) a 2 m.
Ref.: S-3U01

Serie-3 Kit 05 (2F + 2P) ANGULAR Opcionales



1 Uni. Vierteaguas 1 m. (14 x 20 mm.)
Ref.: S-3V02



2 Uni. "U" de Aluminio (23 x 15 x 23 - V.6 ó V.8) a 2,2 m.
Ref.: S-3MU01