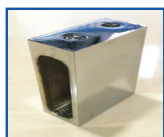


## Serie-3 Kit 03 (F + P + F)      FRONTAL Aluminio + Laton



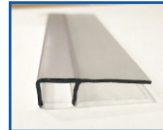
2 Uni.      Soportes Guia  
Ref.: S-3PA01



2 Uni.      Anti-Descarrile Excentrico  
Ref.: S-3AD01



2 Uni.      Rueda Excentrica  
Ref.: S-3R01



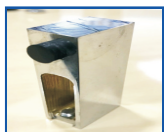
3 Uni.      Ala 2,2 m.  
Ref.: S-3AV6



4 Uni.      Soportes Fijo  
Ref.: S-3S01



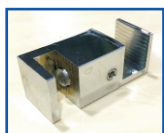
1 Uni.      Cascada 1 m.  
Ref.: S-3C01



2 Uni.      Freno  
Ref.: S-3F01



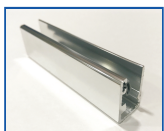
1 Uni.      Vierteaguas 1 m. (9 x 15 mm.)  
Ref.: S-3V01



1 Uni.      Guia Regulable  
Ref.: S-3G01

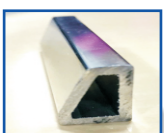


1 Uni.      Perfil Acero (30 x 10 x 1,5 mm.) a 2 m.  
Ref.: S-3PG01

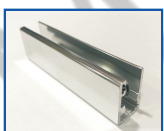


2 Uni.      "U" de Aluminio (23 x 15 x 23 - V. 6 ó V. 8) a 2 m.  
Ref.: S-3U01

## Serie-3 Kit 03 (F + P + F)      FRONTAL Opcionales



1 Uni.      Vierteaguas 1 m. (14 x 20 mm.)  
Ref.: S-3V02



2 Uni.      "U" de Aluminio (23 x 15 x 23 - V. 6 ó V. 8) a 2,2 m.  
Ref.: S-3MU01