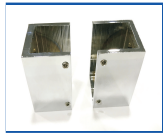
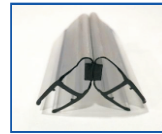


Serie-2 Kit 05 (2F + 2P) ANGULAR Aluminio + Laton



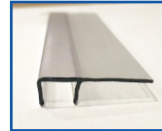
2 Uni. Soportes Guia
Ref.: S-1PA01



2 Uni. Iman 45° 2,2 m.
Ref.: S-1I4501



4 Uni. Rueda Excentrica
Ref.: S-1R01



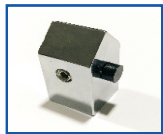
4 Uni. Ala 2,2 m.
Ref.: S-1AV6



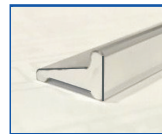
2 Uni. Soportes Fijo
Ref.: S-1S01



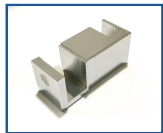
1 Uni. Cascada 1 m.
Ref.: S-1C01



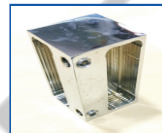
4 Uni. Freno
Ref.: S-1F01



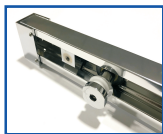
1 Uni. Vierteaguas 1,3 m. (9 x 15 mm.)
Ref.: S-1V01



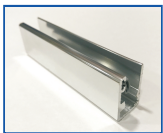
2 Uni. Guia Regulable
Ref.: S-1G01



1 Uni. Esquinero Angular
Ref.: S-1ES01

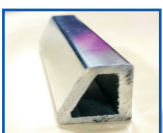


1 Uni. Perfil (40 x 12 x 4 mm.) a 1,5 m. ó 3 m.
Ref.: S-1PG01

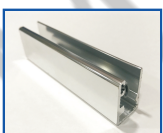


2 Uni. "U" de Aluminio (23 x 15 x 23 - V. 6 mm.) a 2 m.
Ref.: S-1U01

Serie-2 Kit 05 (2F + 2P) ANGULAR Opcionales



1 Uni. Vierteaguas 1,3 m. (14 x 20 mm.)
Ref.: S-1V02



2 Uni. "U" de Aluminio (23 x 15 x 23 - V. 6 mm.) a 2,2 m.
Ref.: S-1MU01