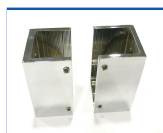


Serie-2 Kit 04 (2F + 2P) FRONTAL Aluminio + Laton



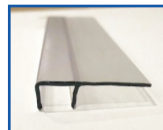
2 Uni. Soportes Guía
Ref.: S-2PA01



2 Uni. Iman Recto 2,2 m.
Ref.: S-2IR01



4 Uni. Rueda Excentrica
Ref.: S-2R01



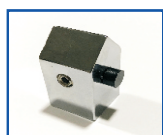
4 Uni. Ala 2,2 m.
Ref.: S-2AV6



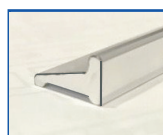
2 Uni. Soportes Fijo
Ref.: S-2S01



1 Uni. Cascada 1 m.
Ref.: S-2C01



4 Uni. Freno
Ref.: S-2F01



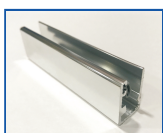
1 Uni. Vieriteaguas 1 m. (9 x 15 mm.)
Ref.: S-2V01



2 Uni. Guía Regulable
Ref.: S-2G01

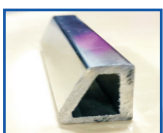


1 Uni. Perfil (48 x 25 x 2 mm.) a 1,5 m. ó 3 m.
Ref.: S-2PG01

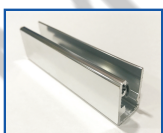


2 Uni. "U" de Aluminio (23 x 15 x 23 - V. 6 ó V. 8) a 2 m.
Ref.: S-2U01

Serie-2 Kit 04 (2F + 2P) FRONTAL Opcionales



1 Uni. Vieriteaguas 1 m. (14 x 20 mm.)
Ref.: S-2V02



2 Uni. "U" de Aluminio (23 x 15 x 23 - V. 6 ó V. 8) a 2,2 m.
Ref.: S-2MU01