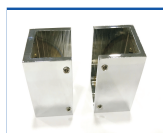


Serie-2 Kit 01 (F + P) FRONTAL Aluminio + Laton



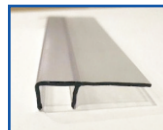
2 Uni. Soportes Guia
Ref.: S-2PA01



1 Uni. Burbuja 2,2 m.
Ref.: S-2B01



2 Uni. Rueda Excentrica
Ref.: S-2R01



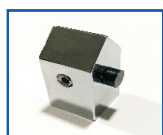
2 Uni. Ala 2,2 m.
Ref.: S-2AV6



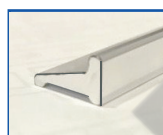
1 Uni. Soportes Fijo
Ref.: S-2S01



1 Uni. Cascada 1 m.
Ref.: S-2C01



1 Uni. Freno
Ref.: S-2F01



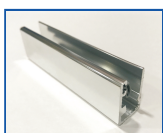
1 Uni. Vieriteguas 1 m. (9 x 15 mm.)
Ref.: S-2V01



1 Uni. Guia Regulable
Ref.: S-2G01



1 Uni. Perfil (48 x 25 x 2 mm.) a 1,5 m. ó 3 m.
Ref.: S-2PG01

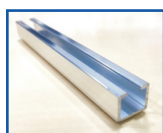


1 Uni. "U" de Aluminio (23 x 15 x 23 - V.6 ó V.8) a 2 m.
Ref.: S-2U01

Serie-2 Kit 01 (F + P) FRONTAL Opcionales



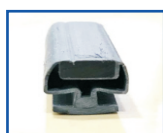
1 Uni. Iman Recto 2,2 m.
Ref.: S-2IR01



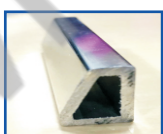
2 Uni. Perfil Cierre 2 m. (12 x 9 mm.)
Ref.: S-2PC01



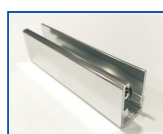
1 Uni. Iman Adhesivo 2,2 m.
Ref.: S-2ADS01



1 Uni. Iman Recto Perfil Cierre 2 m.
Ref.: S-2IPC01



1 Uni. Vieriteguas 1 m. (14 x 20 mm.)
Ref.: S-2V02



1 Uni. "U" de Aluminio (23 x 15 x 23 - V.6 ó V.8) a 2,2 m.
Ref.: S-2MU01