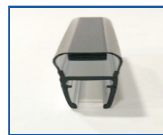


## Serie-1 Kit 04 (2F + 2P) **FRONTAL** Aluminio + Laton



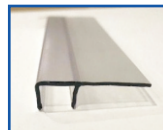
2 Uni. Soportes Guia  
Ref.: S-1PA01



2 Uni. Iman Recto 2,2 m.  
Ref.: S-1IR01



4 Uni. Rueda Excentrica  
Ref.: S-1R01



4 Uni. Ala 2,2 m.  
Ref.: S-1AV6



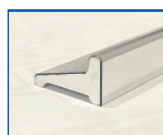
4 Uni. Soportes Fijo  
Ref.: S-1S01



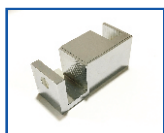
1 Uni. Cascada 1 m.  
Ref.: S-1C01



4 Uni. Freno  
Ref.: S-1F01



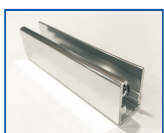
1 Uni. Vierteaguas 1 m. (9 x 15 mm.)  
Ref.: S-1V01



2 Uni. Guia Regulable  
Ref.: S-1G01

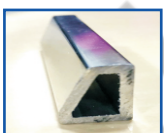


1 Uni. Perfil (40 x 12 x 4 mm.) a 1,5 m. ó 3 m.  
Ref.: S-1PG01

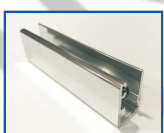


2 Uni. "U" de Aluminio (23 x 15 x 23 - V.6 ó V.8) a 2 m.  
Ref.: S-1U01

## Serie-1 Kit 04 (2F + 2P) **FRONTAL** Opcionales



1 Uni. Vierteaguas 1 m. (14 x 20 mm.)  
Ref.: S-1V02



2 Uni. "U" de Aluminio (23 x 15 x 23 - V.6 ó V.8) a 2,2 m.  
Ref.: S-1MU01